



Newsletter

Hi Everyone

Hi everyone, I hope you have all coming through this bad weather without too many problems? I have decided that now is the time to start my 3000 piece jigsaw puzzle and if I am lucky I will have finished it by the end of next winter.

I hope all the hives have been checked to make sure that the entrances have not been snowed up.

A QUICK CHECK to see that there is enough food to see the bees through to the better weather and spring!!

A small amount of food (fondant) and or pollen pate` may be needed. The bees will leave it if it is not required.

Now sit back, read the books and plan for the coming season, by the way the bees may be doing the same thing so make sure that you put your plans into action first.

The program of meetings which Gavin has arranged for us this year looks very interesting, please give your support and attend as many of them as possible.

See you at the next meeting.

John P.

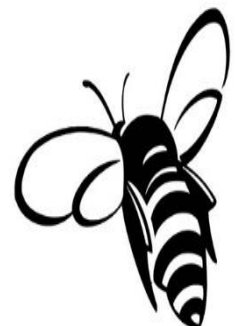
PS: - Bee Shed

I will still be at the bee shed the second Wednesday of each month for the next month from 2pm until 4pm then hopefully we will start to get back to normal with our weekly meetings.

- **Chairman's Message**
- **Note from Meeting Member**
- **Dates for Your Diary**
- **Healthy Swarms, Healthy Bees**
- **Contact**
- **For Sale/Services**

Diary Dates

See Extended list on page 2.....



Note from Our Meetings Member

I hope that those that attended the February talk by Roy Dyche of Bees Abroad found it an interesting and humorous input on the African Honey Bee and the work of the charity. Roy did not charge anything for his time and travelling but he was given a £50 contribution to the charities project he is personally involved in this year. We hope he will return in the winter with an update.

For more information look at www.beesabroad.org.uk.

March 17th

Sissinghurst Parish Rooms, 3PM. Honey Judge Becky Champion is coming to talk to us about Honey Show Entries and Exhibits. From Cakes to Photography, oh and what to do with your precious honey.

April 21st

Sissinghurst Parish Rooms, 3pm. PHD Students Veronica Wignall and Gigi Hennessy from the research unit at Sussex University are coming to talk about the projects they have done so far and their wider context in terms of honey bee ecology, competition with other bee species, and floral resource availability in Britain's countryside. Gigi will be talking about her interesting results regarding the effects of different weather conditions on honey bee foraging behaviour, as well as her work with two rare solitary bee species at Gatwick airport and at Seaford Head.

May 19th

The first Weald "Bee Safari" A full day of visiting hives with Bee Inspector Michael Cooper. Details coming soon.

June 16th

Apiary Visit to The Sheppey Apiary run by Terry Claire (gave a talk earlier in the year) at the HMP site. Details coming soon.

July 21st

Branch BBQ "Oomph" "Bratwurst and Bees!" being hosted by Erik, there will be a request for assistance with this event.

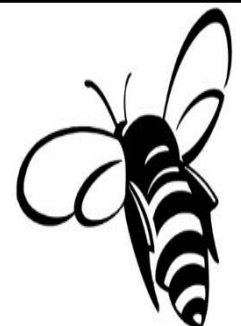
August 18/19th

Honey Show at the Tractor Fest.

September.

It is intended to have a Bee equipment Auction, so have a think about what you have lying around and do not use anymore. All details to be confirmed.

Gavin



Healthy Swarms, Healthy Bees Project

Trudie Thomas	tel: 01233 771934	accounts@trudiethomas.co.uk
Heather Faloon	tel: 01580 291986	heather@littlehareplain.co.uk
Robert Lewis	tel: 01580 291531	robertlewisfarms@btconnect.com
John Priestly	tel: 01580 714498	jjpriestley@msn.com

Contacts List

Chairman and Bee Shed Organiser:

John Priestley
tel: 01580 714498
jjpriestley@msn.com

Vice Chair and Honey Show

Secretary: Heather Faloon
tel: 01580 291986
heather@littlehareplain.co.uk

Treasurer and Membership:

Trudie Thomas
tel: 01233 771934
accounts@trudiethomas.co.uk

**Meetings Committee
Chairman:** Gavin Rees
gavinrees@talktalk.net

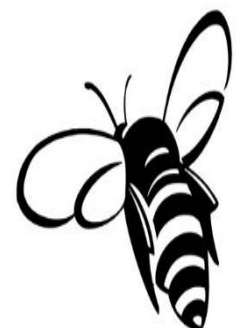
Members Representative:
Christine Clark
chris.a.clark@btinternet.com

Branch Secretary:
Tracey Jewsbury tel:
07903 411504
traceyjewsbury@btinternet.com

Disease Control:
Michael Cooper tel:
01622 891226
Mob: 07808 612609

Website and Newsletter:
David Keepence
tel: 01622 842493
dsk@tumblershill.co.uk

*Postal submissions to:
WBKA, East Hill House
Tumblers Hill
Sutton Valence,
Maidstone, Kent ME17 3AF*





FOR SALE / WANTED & SERVICES OFFERED

BEE SYRUP FOR SALE

Api-invert Syrup with very high sugar content (gravity 1.25kg/Ltr.) from Belgium

from organic sugar:

2x5L containers = £14 together.

*Contact Erik at: erik.uebel@gmail.com
or **07484120586***

With a few days advance notice Erik can deliver the syrup to the Bee Shed.

FREE FRAME CLEANING

Free frame steam cleaning service offered for frames WITH foundation in exchange for the wax harvested.

*Contact Erik at:
erik.uebel@gmail.com*

*or **07484120586***

for more details.

