



# Newsletter

*Hi Everyone*

Are all your hive bits cleaned and ready for the start of the season? I am afraid mine aren't, so I will have to have a concerted effort to get them ready.

Thank you to Nick for your talk at the last meeting, I understand that it was very interesting, unfortunately I was away and so missed it. Hopefully we will be able to get together and you can go through it with me.

Our next meeting will be important for everyone to attend as we will be looking at what we will be doing this coming year and as we have a number of new and experienced beekeepers it is necessary to satisfy all our members so please come and help us decide on what is best for all. The meeting is on the 16th Feb: at the parish rooms in Sissinghurst, starting at 3pm until 5pm. See you there.

*John*

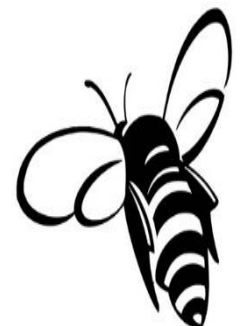
- **Chairman's Message**
- **Bee Shed News**
- **Notes from our Meetings Member**
- **Fund Raising**
- **Note from Erik**
- **Healthy Swarms, Healthy Bees**
- **Contact**
- **For Sale/Services**

## **Bee Shed News**

Closed for the Winter.

No action there yet. I will let you know when we are starting up again in the next newsletter.

John P



## Notes from Our Meetings Member

Hi members and many thanks to Nick De Smith for his talk last month, I hope he resolved the laptop problem as I was in the southern hemisphere and only got his text the next day.

This month's meeting is titled "Wealdbeekeepers update and the year ahead" Due to low numbers that attended the AGM the committee would like to update the members with all the latest news and to have discussions about what the members would like to happen in 2019, without your input it is very difficult to plan what we do.

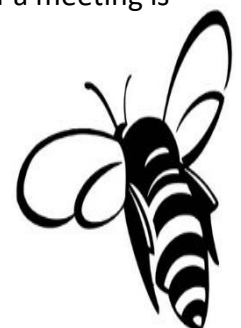
Below is an agenda to give the meeting a bit of structure but we want it to be an informal afternoon. So, we would like to see as many of you as possible and as always there will be light refreshments afterwards (all cakes/biscuits greatly received).

### **Weald Beekeepers update and the year ahead**

#### **Agenda.**

- 1) Introduction from the chairman
- 2) Update on committee positions
- 3) Member update and subscriptions
- 4) Social Media
- 5) 2019 Meetings and events
- 6) Bee shed
- 7) European grant update
- 8) Honey Show
- 9) Volunteers
- 10) Asian Hornet Update
- 11) Any other business

Please see below the dates for this year's meetings, up to and including April; all the meetings will be starting at 3pm on a Saturday at the Sissinghurst Parish Rooms. If the weather is an issue i.e. snow, then a decision will be made whether to cancel or not and I will ask Dave to put out an email if a meeting is cancelled, so check your inbox if we are covered in the white stuff.



**March 16<sup>th</sup>** "Showing and exhibiting honey, frames for extraction, wax and candles" - John Chapman

**April 20<sup>th</sup>** TBA

**May 18<sup>th</sup>** Outdoor meeting, spring inspection.

**June 15<sup>th</sup>** TBA

**July 20<sup>th</sup>** Branch BBQ

Please contact me if you are willing to host an apiary visit, I can then schedule that in or decide to run another Bee safari in June, we have a possible host for the BBQ but still contact me if you would like to host the BBQ just in case things change.

*Gavin*

---

## Correspondence from The Field

From: Dan Roberts

I thought that Society members might appreciate this handy tool. It allows you to see what crop has been sown and where, by field.

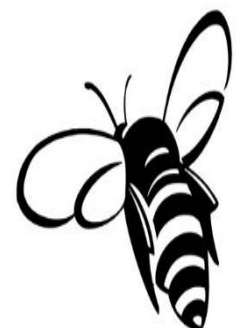
For those beekeepers who might wish to engage local farmers on the advantages of having honey bees on hand for pollination, it gives great insight. For the rest of us, it is an interesting curiosity.

You can move the location around as you wish and look back at historical trends.

<https://map.onesoil.ai/2016/gb/england#12.85/51.1839/0.55079/-53.6/7>

Best Regards,

Dan



## Contacts List

### Chairman & Bee Shed Organiser:

John Priestley  
tel: 01580 714498  
[jjpriestley@msn.com](mailto:jjpriestley@msn.com)

### Honey Show Secretary:

Christine Clerk  
tel: 01580 292013  
[chris.a.clark@btinternet.com](mailto:chris.a.clark@btinternet.com)

### Treasurer and Membership:

Trudie Thomas (Temp)  
tel: 01233 771934  
[accounts@trudiethomas.co.uk](mailto:accounts@trudiethomas.co.uk)

### Meetings Committee

**Chairman:** Gavin Rees  
[gavinrees@talktalk.net](mailto:gavinrees@talktalk.net)

### Website and Newsletter:

David Keepence  
tel: 01622 842493  
[dsk@tumblershill.co.uk](mailto:dsk@tumblershill.co.uk)

### Branch Secretary:

Jane Wood  
01622 859502  
[janewood21@btconnect.com](mailto:janewood21@btconnect.com)

### Disease Control:

Michael Cooper tel:  
01622 891226  
Mob: 07808 612609

### Media & Communications

Erik Uebel  
07484120586  
[erik.uebel@gmail.com](mailto:erik.uebel@gmail.com)

### Postal submissions to:

*WBKA, East Hill House  
Tumblers Hill  
Sutton Valence,  
Maidstone, Kent ME17 3AF*

## Healthy Swarms, Healthy Bees Project

Trudie Thomas	tel: 01233 771934	<a href="mailto:accounts@trudiethomas.co.uk">accounts@trudiethomas.co.uk</a>
Heather Faloon	tel: 01580 291986	<a href="mailto:heather@littlehareplain.co.uk">heather@littlehareplain.co.uk</a>
Robert Lewis	tel: 01580 291531	<a href="mailto:robertlewisfarms@btconnect.com">robertlewisfarms@btconnect.com</a>
John Priestly	tel: 01580 714498	<a href="mailto:jjpriestley@msn.com">jjpriestley@msn.com</a>





# FOR SALE / WANTED & SERVICES OFFERED

## **BEE SYRUP FOR SALE**

*Api-invert Syrup with very high sugar content (gravity 1.25kg/Ltr.) from Belgium*

*from organic sugar:*

*2x5L containers = £14 together.*

*Contact Erik at: [erik.uebel@gmail.com](mailto:erik.uebel@gmail.com)  
or **07484120586***

*With a few days advance notice Erik can deliver the syrup to the Bee Shed.*

## **FREE FRAME CLEANING**

*Free frame steam cleaning service offered for frames WITH foundation in exchange for the wax harvested.*

*Contact Erik at:  
[erik.uebel@gmail.com](mailto:erik.uebel@gmail.com)*

*or **07484120586***

*for more details.*

