



# Newsletter

## *Hi Everyone*

Hi everyone, I hope you are all doing well with your honey collection but not long now before we have to stop and leave the rest of the honey in the hive for the bees' winter store. I will collect until the middle of August and then leave the rest for them.

Don't forget about the honey show and the need to enter your honey etc, hopefully this year we will have enough entries to get the blue ribbon (100 entries) Details of the entry forms have been published in previous news letters but I believe David is sending them out again just in case you have missed them.

Thank you, Erik and Bridget, for hosting the Bar-Bee-Q, unfortunately I was unable to be there for long as I had a family wedding to attend, but I understand that all went well and Erik and family were able to get away for their holiday on time the next morning.

Some of you will know that Erik has been working very hard to get funding for us and I am pleased to say that he has been very successful, the first batch of money has been spent on items for the honey show. I hope a lot you will visit the show at Tractorfest and show us your support, we even have a few slots for anyone who may still wish to help. I think our stand will look outstanding, sorry, I know our stand will look outstanding, so please come and see us there.

If anyone is looking to buy a hive full of bees let me know as I have been offered two hives with bees but as of yet I have not seen them and do not know how much is being asked or the condition of the hives.

We also have an auction in September, so anyone who wishes to buy spare or extra hives then this will be the ideal time.

See you at Tractorfest,

Happy beekeeping.

*John P.*

E-mail me on [jjpriestley@msn.com](mailto:jjpriestley@msn.com)

- **Chairman's Message**
- **Bee Shed News**
- **Note from Meeting Member**
- **Dates for Your Diary**
- **TractorFest & Honey Show Update**
- **Healthy Swarms, Healthy Bees**
- **Contact**
- **For Sale/Services**
- **Honey Show Detailed Information & Entry Forms**

### **Bee Shed News**

We have bees and hives in all states, flourishing and not doing so well, I think we may be spending too much time talking and not enough time bee keeping but I think the main reason is the weather. The thing it does mean is that we see all aspects of beekeeping and what we do to correct the situation as it occurs in our own hives.

John P



## Note from Our Meetings Member

### July Feedback.

So, the Oomph BBQ went off without incident (no burnt offerings, no food poisoning, no stings). I was very sorry I could not make it but I understand a great time was had by all. Many thanks to Erik for hosting it and to those that assisted in many ways.

### Future Meetings Schedule

#### **August**

The next monthly meeting is the Honey Show at Tractorfest, more details in this newsletter.

#### **September**

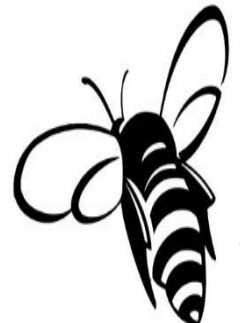
September is our bee equipment auction, so get anything prepared that you would like to sell and don't buy any more equipment until you see what's available.

#### **October**

October will be the beginning of the winter meetings at Sissinghurst Parish rooms. Please contact me if you have any requests for talks etc.

*Gavin*

---



## Note from Media Member

1) "Our branch has a new domain and webpage at: <http://www.wealdbeekeepers.com>

Please visit the page!

Additionally, please also visit our Facebook page at: Weald Beekeepers (@wealdbeekeepers) and "like" and "share" our Facebook page.

Moreover, you can also follow us on twitter at" @wealdbees

Please also share the following QR code to promote our web and social network presence.



In the next weeks we'll complete our web presence and we would welcome your feedback."

2) "Our branch recently received the approval for a grant through LoCase fund which enabled us to buy a new marquee, pop-up tent, marketing material such as banners, business cards, and a solar hybrid inverter. The solar hybrid inverter will enable us be carbon neutral for all the branch's energy needs during exhibitions such as the Biddenden TractorFest and we'll be even able to boil the kettle at the bee shed with free electricity. Thanks to Niko Miaoulis from <http://www.greenmansolar.com> for their very generous donation of solar panels and batteries."

3) "Since we started our activities for match funding in regards for the grant, we have already received £500 from Cranbrook/Sissinghurst parish council.

We are looking forward to bringing you regular updates on our grant match funding activities. We will share all the details at our next monthly meeting."

Regards,

*Erik*





# Tractorfest and Weald Beekeepers' Honey Show

**Saturday 18 and Sunday 19 August 10am to 5pm**

**Woolpack Corner, Tenterden Rd TN27 8BH**

**Not long now to our Honey Show!**

When you are extracting to please remember to keep that "perfect" frame for the show, or some jars of your wonderful honey.

Have some fantastic photographs? Enter them!

Like to bake, then why not try our honey recipes?

Bring along a taster pot of honey for the tastiest honey competition.

You can drive right to the door of our marquee on Friday 17<sup>th</sup> August and drop off your exhibits from 2 to 4pm.

GOOD LUCK EVERYONE.

Thank you to everyone who has volunteered.

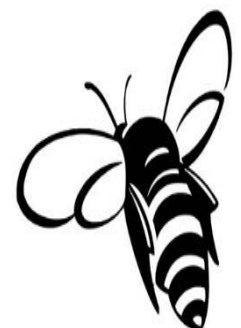
You will get free entry to the event, which is a fabulous day out for all ages.

Could all volunteers please wear a white T shirt, top if possible.

Also bring a bum bag, if you possess one!

Looking forward to seeing you all there.

*Heather and Chris*



## Contacts List

**Chairman and  
Bee Shed Organiser:**

John Priestley  
tel: 01580 714498  
*jjpriestley@msn.com*

**Vice Chair and Honey Show**

**Secretary:** Heather Faloon  
tel: 01580 291986  
*heather@littlehareplain.co.uk*

**Treasurer and Membership:**

Trudie Thomas  
tel: 01233 771934  
*accounts@trudiethomas.co.uk*

**Meetings Committee**

**Chairman:** Gavin Rees  
*gavinrees@talktalk.net*

**Members Representative:**

Christine Clark  
*chris.a.clark@btinternet.com*

**Branch Secretary:**

Tracey Jewsbury tel:  
07903 411504  
*traceyjewsbury@btinternet.com*

**Disease Control:**

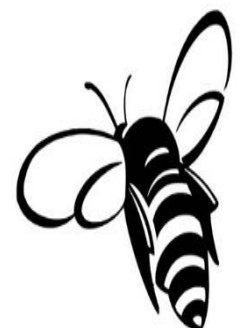
Michael Cooper tel:  
01622 891226  
Mob: 07808 612609

**Website and Newsletter:**

David Keepence  
tel: 01622 842493  
*dsk@tumblershill.co.uk*

*Postal submissions to:*

*WBKA, East Hill House  
Tumblers Hill  
Sutton Valence,  
Maidstone, Kent ME17 3AF*





# FOR SALE / WANTED & SERVICES OFFERED

## **BEE SYRUP FOR SALE**

*Api-invert Syrup with very high sugar content (gravity 1.25kg/Ltr.) from Belgium*

*from organic sugar:*

*2x5L containers = £14 together.*

*Contact Erik at: [erik.uebel@gmail.com](mailto:erik.uebel@gmail.com) or 07484120586*

*With a few days advance notice Erik can deliver the syrup to the Bee Shed.*

## **FREE FRAME CLEANING**

*Free frame steam cleaning service offered for frames WITH foundation in exchange for the wax harvested.*

*Contact Erik at:*

*[erik.uebel@gmail.com](mailto:erik.uebel@gmail.com)*

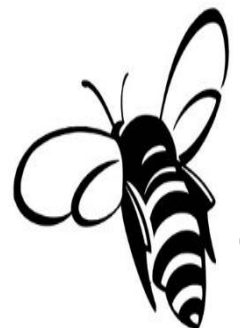
*or 07484120586*

*for more details.*



## Healthy Swarms, Healthy Bees Project

Trudie Thomas	tel: 01233 771934	<a href="mailto:accounts@trudiethomas.co.uk">accounts@trudiethomas.co.uk</a>
Heather Faloon	tel: 01580 291986	<a href="mailto:heather@littlehareplain.co.uk">heather@littlehareplain.co.uk</a>
Robert Lewis	tel: 01580 291531	<a href="mailto:robertlewisfarms@btconnect.com">robertlewisfarms@btconnect.com</a>
John Priestly	tel: 01580 714498	<a href="mailto:jjpriestley@msn.com">jjpriestley@msn.com</a>





# Tractorfest and Weald Beekeepers' Honey Show

**Saturday 18 and Sunday 19 August 10am to 5pm**

**Woolpack Corner, Tenterden Rd TN27 8BH**

Our annual Honey Show is fast approaching; you will find the entry form, honey show schedule to follow.

**Please read the schedule carefully as there are some changes this year.**

In summary, 12oz jars now accepted along with the traditional 1lb jars

You can drop of your exhibits on the Friday the 17<sup>th</sup>, which will enable you to drive right to the door of our marquee.

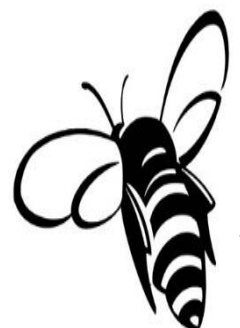
All cakes, biscuits etc. will need to be stored in tins overnight.

Best Wishes and Good Luck

Heather and Chris

heather@littlehareplain.co.uk

[chris.wealdbeekeepers@gmail.com](mailto:chris.wealdbeekeepers@gmail.com)





## **Tractorfest 2018 - SHOW DETAILS**

**Saturday 18<sup>th</sup> and Sunday 19<sup>th</sup> August**

Woolpack Corner, Tenterden Rd TN27 8BH

### **SPECIAL AWARDS AND TROPHIES**

**NOVICE CUP** to be awarded to the member with the entry placed first in Class H.

**WILSON CUP** to be awarded to the member gaining the most points in Classes A, B, C and D.

**FITALL CUP** to be awarded to the member, or his/her family, gaining the most points for three entries in Classes S, T, V and W. Each of the three selected entries must be made by the same individual.

**PEARCE PLAQUE** to be awarded to the winner of Class G.

**HATCHER CUP** to be awarded for best honey in show

**SURPRISE GIFT** for best all-rounder, most points achieved in classes A to P

**BRITISH BEEKEEPERS ASSOCIATION**, Certificate of Merit or Blue Ribbon to be awarded for the best exhibit in the Show, assuming over 50 or 100 entries are made respectively.

**All exhibits to be checked into the Weald Beekeepers marquee between 1400 and 1600hrs on Friday 17<sup>th</sup> August. If you are unable to submit your entries during this time and cannot find anyone to do it for you, please contact Chris Clark.**

**Judging will commence promptly at 9.30 hrs. on Saturday the 18<sup>th</sup>.**

This year we are fortunate to have John F. Chapman as our judge. John is Chairman of Medway Beekeepers and Honey Show Secretary for Medway and Kent Beekeeper association. He also organizes the honey show at the Kent County Show and exhibits successfully at the National Honey Show.

Please do allow time to check that your liquid honey is in the correct class for its colour.

### **Prize giving at 1400hrs**

Exhibits are not to be removed until after 1600hrs. on Sunday the 19<sup>th</sup> August.

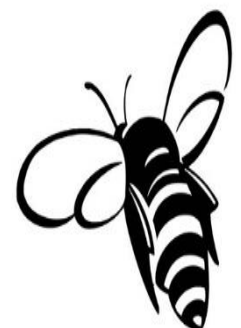
Please read the detailed rules carefully before preparing your entries.

This show is held in accordance with the most recent Show Rules of the British Beekeepers Association and exhibitors are bound by them.

An entry form for the show is enclosed with this schedule. Please post to the address below and enclose a stamp addressed envelope if you wish to receive your labels in advance. Alternatively, you can email your entry and collect your labels between 1400hrs and 1600hrs on Friday the 17<sup>th</sup> August from our marquee on the Tractorfest site.

All applications for entries must arrive by **Friday 10<sup>th</sup> August.**

There are no entry fees (and no prize money).





## RULES

1. Exhibitors may make more than one entry in any one Class but will not be eligible for more than one award in that Class.
2. A Novice is a member who has never won a first prize in any honey class at a show.
3. All honey and wax must be the product of the exhibitor's own apiary, with the exception of Class N, S, T, V and W.
4. Honey must be presented in B.S. squat 1lb jars with matching lids of any type, or 12oz round or hexagonal jars, except where stated. (See class G).
5. Frames must be presented in standard display cases, glazed on both sides.
6. Sections must be enclosed in section showcases.
7. Cut comb must be displayed in standard cut comb containers with clear plastic lids.
8. No label, card, trademark or other distinguishing mark, other than that provided by the show secretary, may be placed upon any part of an exhibit, except in classes G, Q, R and W.
9. Individually numbered labels will be supplied for each entry and must be affixed to exhibits as follows:

Honey jars and mead bottles:	15mm ( $\frac{1}{2}$ " ) above the bottom of the container.
Sections and frames:	One in the top right-hand corner of the front glass of the case, with the duplicate on top of the frame or section.
Cut comb:	One on the lid: the duplicate on the side of the container.
Cake of beeswax:	One on the upper surface of the wax, the duplicate on any stand, case or dish used for display.
10. Cakes, biscuits or sweetmeats should be in plastic bags or covered with plastic/cling film and may be displayed on plates. One label should be affixed to the plate or to the cake with a pin, another placed in the bag with the cake and the final label placed on your container. As entries will be left in the tent overnight they must also be presented in a tin or rigid plastic container. The stewards will display the entries in the morning. This applies to classes S, T, W and any edibles in class Q not already in glass or tin.
11. Entries for class W, your choice recipes, can be donated to the show for sale as refreshments after judging. If you want your entry returned, please mark this on your entry form; otherwise it will be assumed to be a gift.

For the two composite Weald Branch Show trophies points will be allocated on the following basis: First - 6 points; Second - 5 points; Third - 4 points; Very Highly Commended - 3 points; Highly Commended - 2 points; Commended - 1 point.



## HONEY SHOW SCHEDULE

### HONEY AND BEESWAX CLASSES

- A** Two 454gm (1lb) or 340gm (12oz) jars of light extracted honey.
- B** Two 454gm (1lb) or 340gm (12oz) jars of medium or dark extracted honey.
- C** Two 454gm (1lb) or 340gm (12oz) jars of naturally crystallised or soft set honey.
- D** One cake of beeswax – at least 20mm ( $\frac{3}{4}$  inch thick) and weighing at least 200g (7oz) weight.
- E** One frame of honey suitable for extraction.
- F** Two 454gm (1lb) or 340gm (12oz) jars of chunk honey. To contain approximately 50% cut comb.
- G** Six jars of honey in 340g or 454g (12oz or 1lb) weights, labelled for gate sale.
- H** Novice - Two 454gm (1lb) or 340gm (12oz) jars of honey of any one colour.
- I** Three decorative beeswax candles, attractively presented. Any method of production may be used. Candles need not necessarily be the same size or pattern. They will not be lit.

### COUNTY CLASSES

#### **Open to all members of Beekeeping Organisations within Kent.**

- J** Two 454g (1lb) or 340gm (12oz) jars of light extracted honey.
- K** Two 454g (1lb) or 340gm (12oz) jars of medium or dark extracted honey.
- L** Two 454g (1lb) or 340gm (12oz) jars of naturally crystallised or soft set honey.
- M** Two sections of comb honey or two boxes of cut comb. Minimum weight 170g (6oz).
- N** Two foundation Candles presented as for sale. May be any size, natural or coloured beeswax foundation. They will not be lit.
- P** **‘Tate Modern Wax’**  
A piece of Wax, minimum weight 225g (8oz), no maximum weight but not to occupy more than 330mm x 330mm (13" x 13") of table space.

Quality, cleanliness, colour etc not important. Not a candle. Formed by any method into an interesting, peculiar or fantastic shape having no use whatsoever ..... A 'Tate Modern' piece. Originality more important than artistic ability. Title on the front. Class open to all members and their families of all ages.



## GENERAL BEEKEEPING CLASSES

### Q **Products of the Hive.**

An exhibit comprising four different home-produced products using honey and/or beeswax, excluding candles. Each product to be labelled for information if necessary. (The following are suggested as possible entries: - chutney, conserves, honey drinks including mead, lotions, cakes and sweetmeats). This is not a display class and all items may be either tested or tasted. The exhibit is limited to table space of not

more than 610mm x 610mm (2ft x 2ft).

### R **Photography**

Mounted colour print photograph relating to bees or beekeeping, taken by the exhibitor, mounted on plain, tinted or coloured card, overall size 250mm x 200mm (10" x 8"), title on the front

## COOKERY CLASSES

### **Class S. Honey cake**

#### Ingredients

- 170g/6oz clear honey
- 140g/5oz butter
- 85g/3oz light muscovado sugar
- 2 eggs, beaten
- 200g/7oz self-raising flour, sieved
- water

#### For the icing

- 55g/2oz icing sugar
- 1 tbsp clear honey
- hot water

#### Method

1. Preheat oven to 180C/160F fan/350F/Gas 3 and butter and line the bottom of a 2lb loaf tin
2. Measure the honey, butter and sugar into a large pan. Add a tablespoon of water and heat gently until melted.
3. Remove from the heat and mix in the eggs and flour.
4. Spoon into the cake tin and bake for 45 - 50 minutes or until the cake is springy to the touch and shrinking slightly from the sides of the tin.
5. Cool slightly in the tin before turning out onto a wire rack.
6. While the cake is still warm, make the icing by mixing the sugar and honey together with 2-3 teaspoons of hot water. Trickle over the cake in whatever design takes your fancy.



## Class T

### Oaty Crisp biscuits

#### Ingredients

- 75g [2.5 oz] wholemeal flour
- 1 tsp baking powder
- 115g [5 oz] rolled oats
- 90g butter, cubed
- 2.5 tbsp honey
- 160 ml [5.5 fl oz] milk
- 90g [3 oz] raisins

#### Method

1. Cover a baking tray with baking paper and set aside.
2. In a bowl, sift flour and baking powder and stir through rolled oats.
3. Rub through butter with your fingers until the mix resembles crumbs. Stir in honey, milk and raisins until well combined and chill for 2 hours.
4. Preheat oven to 200 C, 180C fan, 425F, Gas 6
5. Remove biscuit dough from fridge and roll into balls, place on tray and slightly flatten with a fork.
6. Bake for 15- 20 minutes.

#### Note

At first you will think that this mixture is too wet to bake but after 2 hours in the refrigerator, the oats soak up all of the milk and you are able to roll these into a ball and bake.

#### Class W. Your choice recipe.

Any recipe of the exhibitor's choice.

Honey cake, biscuits or confectionery, plain or fancy, which must contain honey as an ingredient. A full list of ingredients, procedures and cooking details to be displayed. The entry to consist of one cake or six biscuits or buns or a minimum of 100g (4oz) of sweets on a plate.

NB: Classes O and U have been deliberately omitted to avoid confusion with Class Q or V.

#### Contact for entries

Chris Clark

Belmont, Biddenden, TN27 8LS

Email Chris Clark <[chris.wealdbeekeepers@gmail.com](mailto:chris.wealdbeekeepers@gmail.com)>



# ***Kent Beekeepers Association***

***Weald Branch Honey Show Saturday 18<sup>th</sup> August  
Tractorfest, Woolpack Corner, Biddenden***

***ENTRIES MUST BE CHECKED IN BETWEEN 1400HRS AND  
1600HRS FRIDAY 17TH AUGUST***

## ***Entry Form***

Class	Description of Entry	
I have read the conditions in the schedule and I agree to abide by them		
Signature		Date
Name and address in block capitals		
To be returned before Friday 10 <sup>TH</sup> August		
To: Chris Clark Belmont, Biddenden, TN27 8LS chris.wealdbeekeepers@gmail.com		
Please enclose a stamped addressed envelope		

